

MONTHLY MEMBERSHIP PROGRESS REPORT

LOCATION WASHINGTON

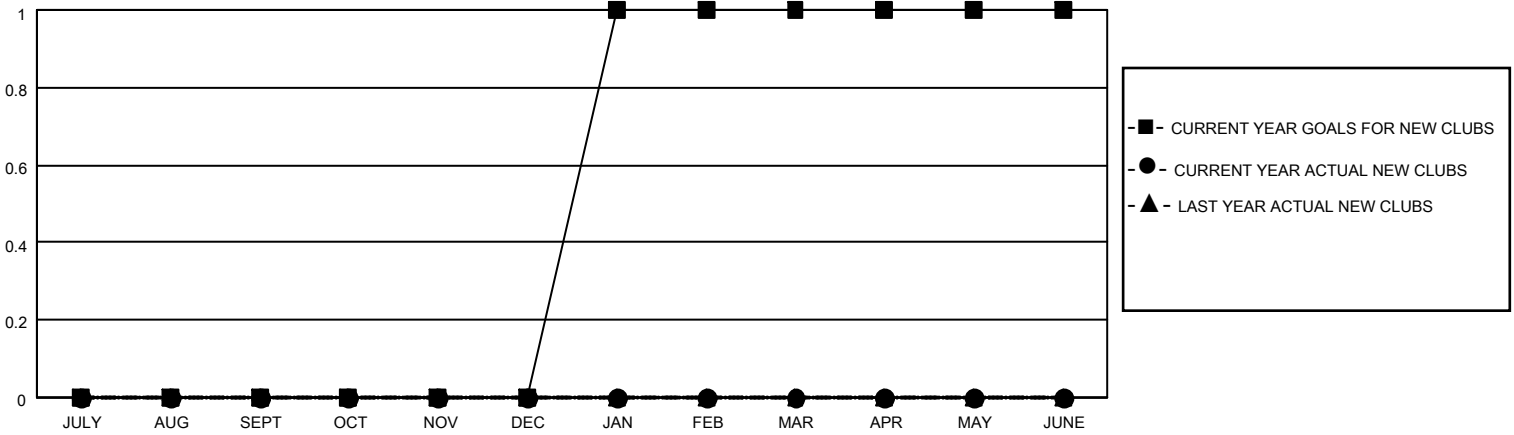
District 19 F

Results as of: 6/30/2021

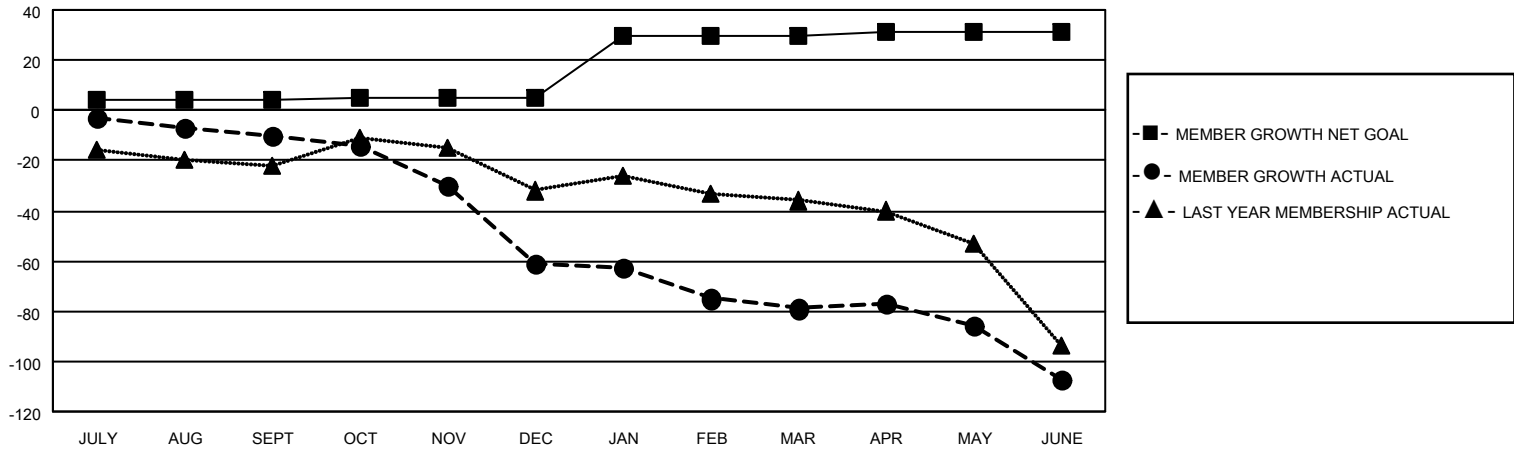
Clubs			
RESULTS FOR 2020-2021			
QUARTER	NEW CLUB GOAL	NEW CLUBS	DROPPED CLUBS
JULY/AUG/SEPT	0	0	0
OCT/NOV/DEC	0	0	0
JAN/FEB/MAR	1	0	1
APR/MAY/JUNE	0	0	0

Members			
RESULTS FOR 2020-2021			
QUARTER	MEMBER GROWTH NET GOAL	MEMBER GROWTH ACTUAL	DROPPED MEMBERS ACTUAL (including transfers)
JULY/AUG/SEPT	4	3	11
OCT/NOV/DEC	1	2	53
JAN/FEB/MAR	25	21	33
APR/MAY/JUNE	1	27	54

GOALS AND ACTUAL NEW CLUBS CUMULATIVE



GOALS AND ACTUAL MEMBERS CUMULATIVE



DROPPED CLUBS: 1	17 CLUBS OF 45 ADDED 1 OR MORE NEW MEMBERS	<u>GENDER DISTRIBUTION</u>
<u>DROPPED MEMBERS</u>		MALE 839 (79.08%)
DECEASED 17		FEMALE 222 (20.92%)
CLUB CANCELLED 8		TOTAL FAMILY UNIT MEMBERS 137
OTHER 126		FAMILY MEMBERS PAYING HALF DUES 71
TOTAL 151	CLICK HERE FOR CUMULATIVE MEMBERSHIP DATA	